

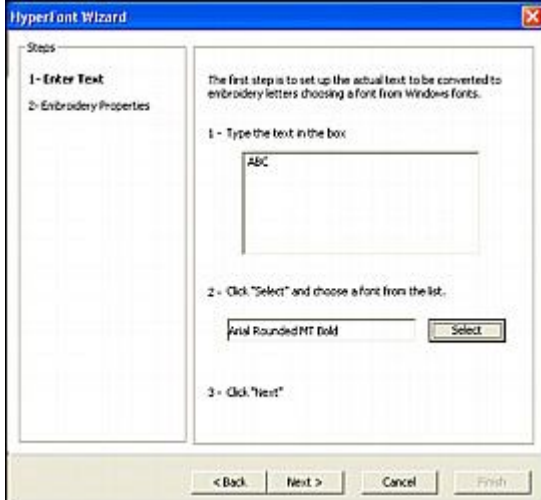
Creating a Blended Fill in Stitch & Sew 2

To create a blended letter or shape, you must first create the shape with the Freeform tool in the Digitizing section

Click **Create>Hyper Font**

Type the letters **ABC** in the text Box

Choose a font (Preferable a bold style)



Click **Next**

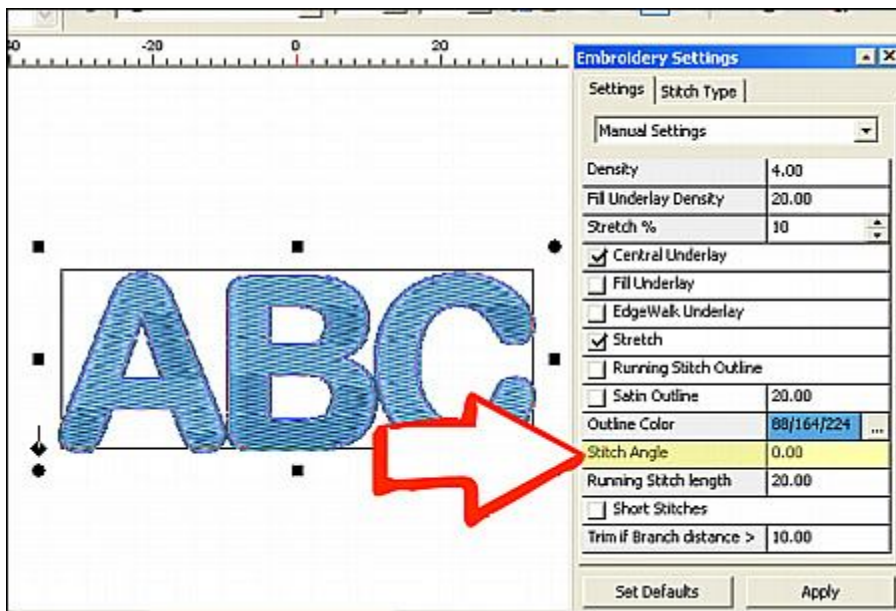
Choose the fill type "**FILL STITCH**"



Click **Finish**

Click the Right Mouse Button and Open **Embroidery Settings**

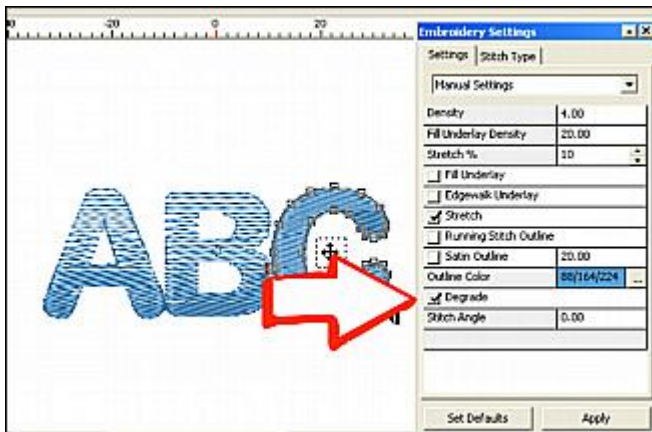
Set the **Stitch Angle** to **0**, Press **Apply** (Do not Close Embroidery Settings You will need them in the next step)



Build stitches

Click **EDIT** mode

Click on the first letter, (**A**) In the **Embroidery Settings**, Check the **DEGRADE** box,



Press **Apply**

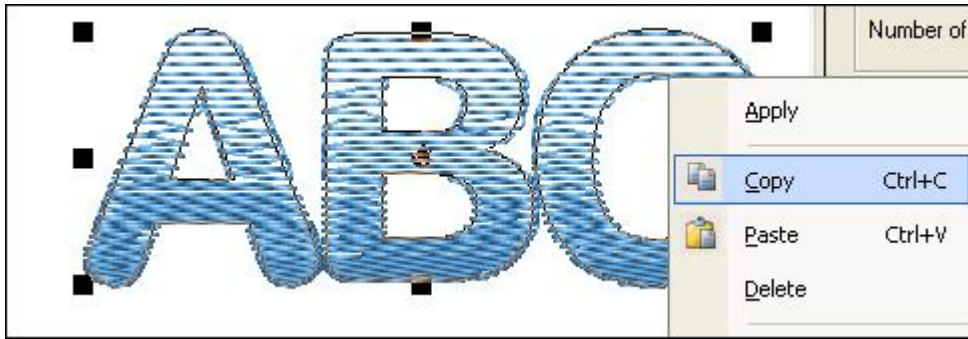
Click on the next letter, click **DEGRADE**, then **Apply**, Repeat for all the letters

This is what you should have so far

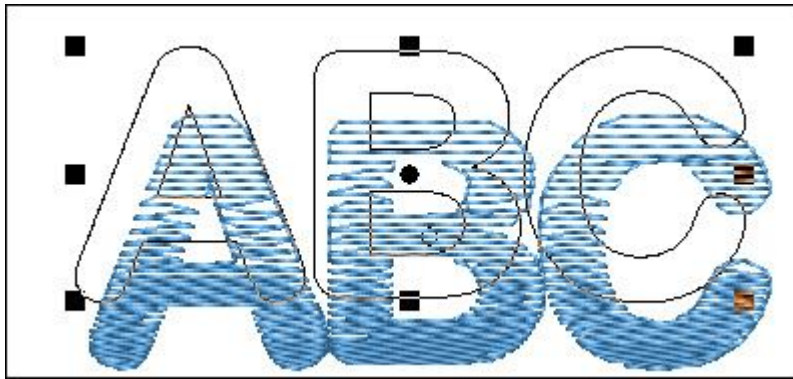


Click the **EDIT** mode to return to Neutral

Select all the blocks on the screen by clicking and dragging a box around them, **Right click** the mouse and select **COPY**



Right Click Again and Select **PASTE**



Position the pasted blocks directly over the originals



Click **Right Mouse** and press **Apply**

Select the all 3 of the second set of blocks in the Object list at the bottom of the screen and change their color



You should see something like this.



Click **EDIT** Mode

Click on the First block of the second set,(Use the Object list it is much easier to select the correct block.)

In the **Embroidery Settings**, Change the **Stitch Angle** under the DEGRADE checkbox to **180**, this will switch the degrade from top to bottom to bottom to top, press **Apply**



Repeat for the remaining blocks

You should end up with something like this



Remember, stitches are not like ink, they cannot blend well in small areas. In order for a blend to be effective the blocks must be fairly large. In general text should be well over 1 inch in height, the larger the better

Also, When creating blends, if possible, creating an outline around the finished blocks will improve the overall appearance



